

## Museum of Fine Arts, Boston

465 Huntington Avenue

Boston, MA 02115

[www.mfa.org](http://www.mfa.org)

Each coupon admits two adults for \$10 each.

Youths 7-17 are free.\*

Youths 6 and under free. Pass does not need to be returned.

\*Youths 7 - 17 are admitted free on weekdays after 3 pm, weekends, and Public School holidays.

## Strawbery Banke Museum

Portsmouth, NH

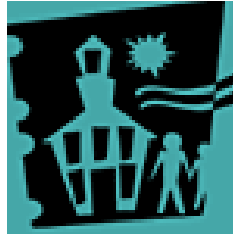
[www.strawberybanke.org](http://www.strawberybanke.org)

(Open daily May 1-Oct. 31.)

Each pass admits two adults and up to four children ages 5-17.

Children four and under are free.

Additional adults receive a \$2 discount (regularly \$15). Pass may be used for a 10% discount at the Museum Store.



## WILLIAM FOGG LIBRARY



### MUSEUM PASS INFORMATION

*In the Kent Room  
Children's Museum of  
New Hampshire  
Boston Museum of Science  
Seacoast Science Center*

*At the Main Desk  
Portland Museum of Art  
Museum of Fine Arts, Boston  
Strawbery Banke Museum*

*Library Hours  
Mondays and Wednesdays 1-8  
Tuesdays and Thursdays 10-5  
Saturdays 9-1  
(TEL.) 207 439-9437  
(FAX) 207 439-1580*

Available at the adult services desk are passes to Portland Museum of Art, Strawberry Banke Museum and the Museum of Fine Arts, Boston. These passes are funded by the **Friends of the William Fogg Library.**



Available at the children's services desk are passes to The Children's Museum of New Hampshire, The Seacoast Science Center, and the Museum of Science, Boston. These passes are funded by **Kennebunk Savings Bank.**

You may call or come in to the library to reserve a pass for a specific date. Several of the passes are one-use passes that you present for admission and do not need to be returned. Others are cards that will need to be returned promptly so that others can use them. Please return them in the container provided. You may use the book drop to return a pass when the library is closed.

## **Children's Museum of New Hampshire**

**6 Washington St. Dover, NH  
(603 436-3853).**

**[www.childrens-museum.org](http://www.childrens-museum.org)**

Allows reduced admission for 4 people at \$5.00 apiece. Children under 1 are free.

Pass does not need to be returned.

## **Seacoast Science Center**



**Odiorne Point, Rye NH  
(603 436-8043)**

**[www.seacentr.org](http://www.seacentr.org)**

Allows two adults and up to four children or grandchildren at 50% off the cost of regular admissions. Does not include admission to the State Park. (After May 1st, \$4 for adults, \$2 for ages 6-11, 6 and under free).

## **Museum of Science, Boston**

**Boston, MA (617 723-2500)**

**[www.mos.org](http://www.mos.org)**

Allows reduced admission to the exhibit halls only for up to 4 people who pay \$10 each. There is no reduction on parking.

Pass does not need to be returned.

## **Portland Museum of Art 7 Congress Square Portland, ME**

**[www.portlandmuseum.org](http://www.portlandmuseum.org)**

Open Tues-Sun, 10-5: Fri, 10-9. Open Mon, 10-5, Memorial Day through Columbus Day. Pass allows free entry for no more than 2 adults and up to 6 children, per day.

Pass does not need to be returned.

